




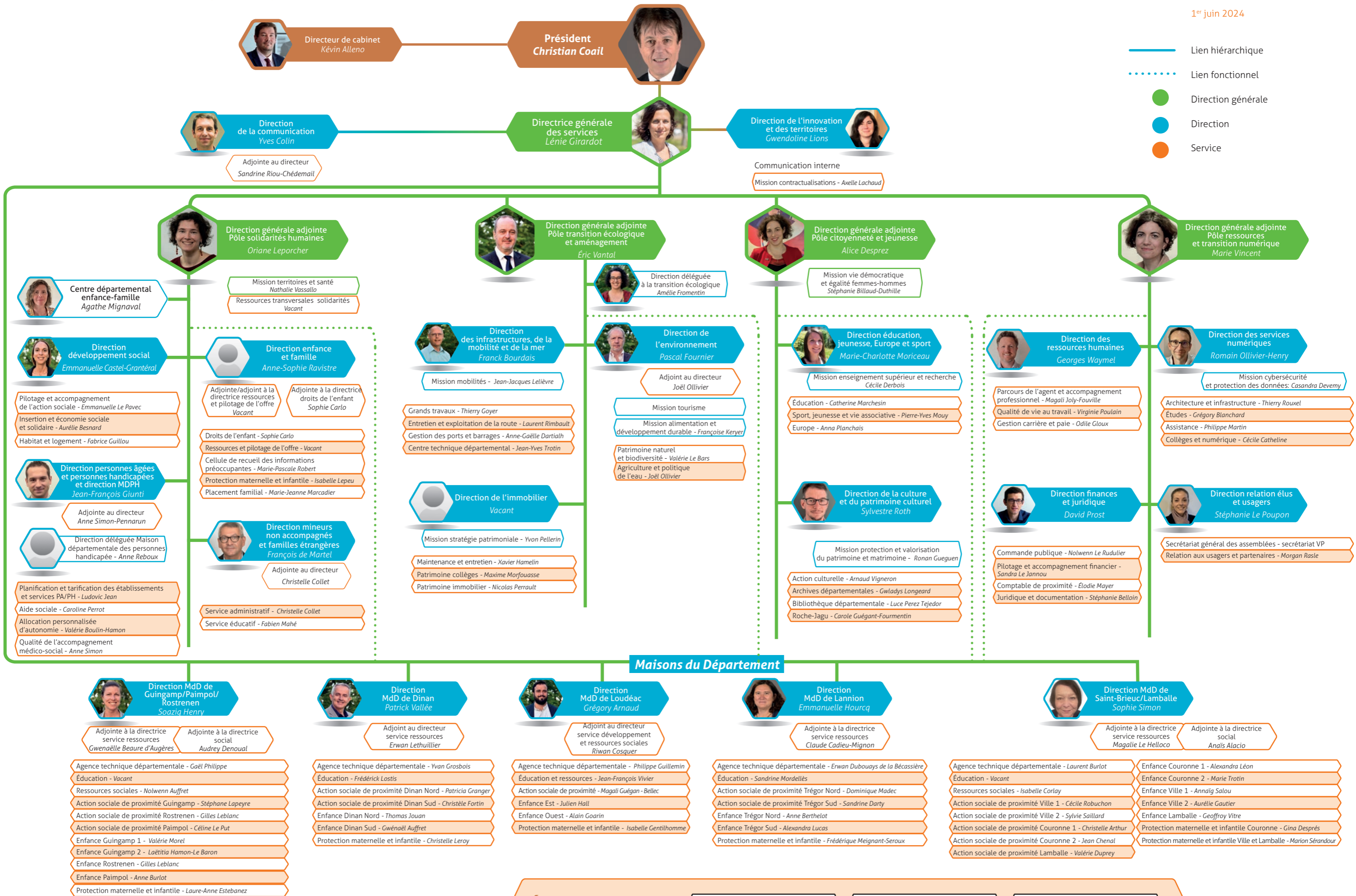


Organigramme des services du Conseil départemental des Côtes d'Armor

1^{er} juin 2024

-  Lien hiérarchique
-  Lien fonctionnel
-  Direction générale
-  Direction
-  Service



Établissements

- Maison départementale des personnes handicapées
- GIP/Labocéa
- Maison départementale des jeunes et des adolescents